

ProMax®

ProMax is an economical water heater designed for households that need an exceptional performer that provides long-lasting value.

INTELLIGENT CONTROL LOGIC

The internal microprocessor provides enhanced operating parameters and tighter differentials for precise sensing and faster heating response to optimize performance.

SELF-POWERED ELECTRONIC GAS VALVE

Uses a thermopile to generate the power needed to operate the electronic gas control without requiring an external power source.

DIAGNOSTICS

The electronic gas control incorporates an LED status indicator that monitors system operation & service diagnostics.

DYNACLEAN™ DIFFUSER DIP TUBE

Helps reduce lime and sediment buildup, maximizes hot water output. Made from long-lasting PEX cross-linked polymer.

COREGARD™ ANODE ROD

A. O. Smith's exclusive aluminum anode has a stainless steel core, protects tank against corrosion.

GREEN CHOICE® GAS BURNER

Patented "Eco-Friendly" design reduces NOx emissions by up to 33% and complies with less than 40 ng/j requirements for low NOx emissions.

PUSH-BUTTON PIEZO IGNITOR

Makes lighting pilot fast and easy with one-hand push-button spark ignition.

DURABLE, TAMPER-RESISTANT BRASS DRAIN VALVE

BLUE DIAMOND® GLASS COATING

Provides superior corrosion resistance compared to industry-standard glass lining.

CSA CERTIFIED AND ASME RATED T&P RELIEF VALVE

Top-mounted T&P relief valve available as option.

CODE COMPLIANCE

Meets UBC, CEC, SBCC, HUD and BOCA National Codes. Meets the thermal efficiency and standby loss requirements of the U.S. Department of Energy and current edition of ASHRAE/IESNA 90.1 and meets the Federal Energy Efficiency Standards effective January 20, 2004, according to the National Appliance Energy Conservation Act (NAECA) of 1992.

DESIGN-CERTIFIED BY CSA INTERNATIONAL

According to ANSI Z21.10.1 - CSA 4.1 standards governing storage-type water heaters.

FLAMMABLE VAPOR IGNITION RESISTANT COMPLIANT DESIGN

See other side.

6-YEAR LIMITED TANK AND PARTS WARRANTY

For complete information, consult written warranty or A. O. Smith.



SERIES 300/301



Low Lead Content

ProMax® SERIES 300/301

MODEL NUMBER	FIRST HOUR RATING GALLONS	ENERGY FACTOR	GALLON CAPACITY	BTU INPUT PER HOUR NATURAL†	RECOVERY 90°F RISE GALLONS PER HOUR	FOAM THICKNESS (INCHES)	DIMENSIONS IN INCHES						DRAFT HOOD OUTLET	APPROXIMATE SHIPPING WEIGHT (LBS)
							A	B	C	D	E	F		
TALL MODELS														
GCV-30	67	.61	30	35,500	36	1	61-1/2	58	16	13	8	52	3 or 4	112
GCV-40	70	.59	40	40,000	41	1	61-3/4	58-1/4	18	13	8	51-3/4	3 or 4	138
GCV-50	88	.58	50	40,000	41	1	60-3/4	57	20	13	8	50-1/4	3 or 4	153
SHORT MODELS														
GCVL-30	60	.61	30	35,500	36	1	50	46-3/8	18	13-1/2	8	40	3 or 4	112
GCVL-40	66	.59	40	40,000	41	1	51-1/2	47-3/4	20	13	8	41	3 or 4	135
GCVL-50	93	.61	50	40,000	41	2	53-1/4	49-1/2	24	13-1/4	8	42-1/2	3 or 4	175

Recovery capacity based on actual performance tests.

Water Connections – 3/4" on all models.

† Propane Gas – 40,000 for the 50 gallon short, 37,000 for the 50 gallon tall & 36,000 BTU for 40 gallon models and 32,000 BTU input for 30 gallon models.

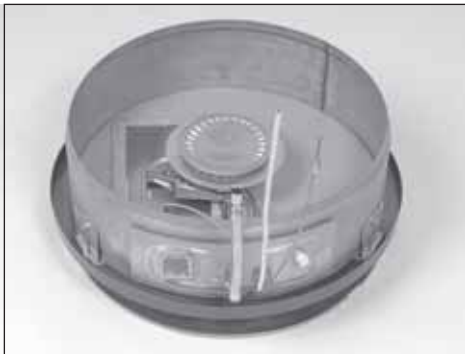
For 10-Year Tank and 6-Year Parts Warranty, change "G" to "X" in Model Number (example: XCV-40).

Heat Trap Nipples factory-installed on all models.

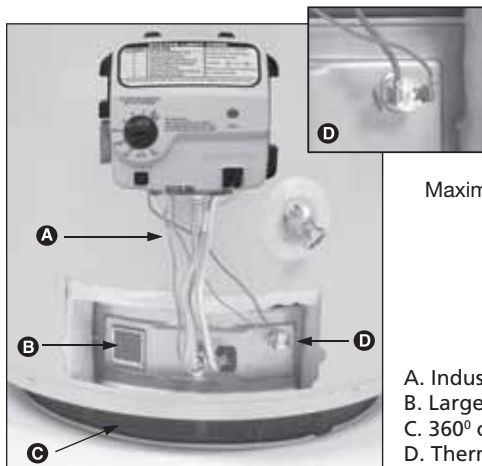
Flammable Vapor Ignition Resistant (FVIR) Water Heaters

A. O. Smith FVIR design meets the American National Standards Institute standards (ANSI Z21.10.1 - CSA 4.1) that deal with the accidental or unintended ignition of flammable vapors, such as those emitted by gasoline.

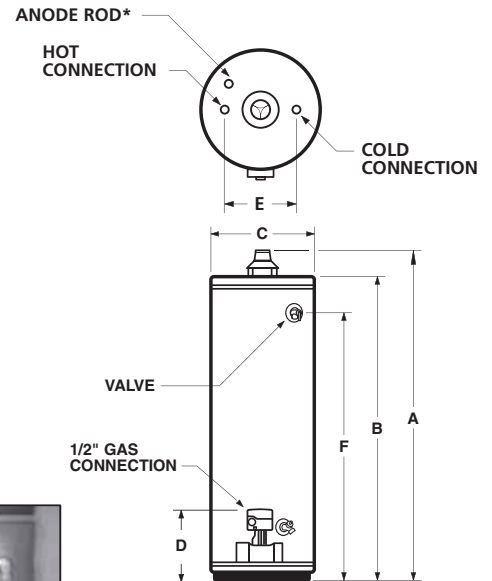
Feature a sealed combustion chamber with air intake filter and a flame arrestor built into the water heater base. In addition, a thermal cutoff (TCO) device, is designed to shut off gas flow to the burner and pilot if poor combustion is detected.



If flammable vapors accidentally enter the combustion chamber, the arrestor is designed so flames burn off the top surface and can not escape down through the arrestor.



- A. Industry standard thermopile
- B. Large View Port for easy burner inspection
- C. 360° combustion air filter
- D. Thermal Cutoff (TCO) with manual reset



*Location for optional top-mounted T&P Valve if ordered from factory.

Maximum Hydrostatic Working Pressure: 150 PSI.