



Installation and Operation Guide

Drinking Water Systems

Thank you for choosing Everpure - Water You Can Trust. We know that you will be satisfied with the quality water you'll have for your family to drink and use for beverages and cooking. Everpure® products are unique in the consumer marketplace providing the filtration that commercial professionals use in their restaurants and beverage service. Everpure - The only consumer filtration products that exclusively use submicron precoat technology to provide premium quality water. Here's how your product works.

Everpure's exclusive precoat technology combines Micro-Pure® and a unique pleated filter membrane to provide more filtering surface area than other similar-sized systems. Certain systems include granular activated carbon for the reduction of volatile organic chemicals. A heavy-duty aluminum cartridge housing protects the system from splitting or bursting. Built-in shutoff, coupled with twist off disposable cartridges allows for easy, no mess filter changes.

All Everpure Drinking Water Systems must be maintained according to the manufacturer's instructions, including the timely replacement of the filter cartridges. Do not use with water that is microbiologically unsafe, or of unknown quality, without adequate disinfection before or after the system. Systems certified for cyst reduction may be used on disinfected waters that may contain filterable cysts. Check for compliance with state and local laws and regulations. Note: Some states require installation by licensed installers, and some states prohibit the use of saddle valves. **NOTE: Claims of capacity or rated service cycle are not applicable for mechanical filtration units because of broad variations in the quality and quantity of particulate matter found in drinking water.**

EVERPURE DRINKING WATER SYSTEMS CARRY NSF CERTIFICATION

EVERPURE MODEL NUMBER and REPLACEMENT CARTRIDGES	H-54	H-104	H-300-HSD	H-300	H-300+M	H-1200 1 & 2
Systems Tested and Certified by NSF International against NSF/ANSI Standards 42 and 53 for the reduction of:						
Standard No. 42: Aesthetic Effects						
<i>Chemical Reduction Unit</i>						
Taste & Odor	Yes	Yes	Yes	Yes	Yes	Yes
Chlorine Taste & Odor	Yes	Yes	Yes	Yes	Yes	Yes
Chloramine Taste & Odor	N/A	N/A	N/A	Yes	N/A	Yes
<i>Mechanical Filtration Unit</i>						
Particulate	Class I	Class I	Class I	Class I	Class I	Class I
Standard No. 53: Health Effects						
<i>Chemical Reduction Unit</i>						
Volatile Organic Chemical (VOC)	N/A	N/A	Yes	Yes	Yes	Yes
Lead	Yes	Yes	Yes	Yes	Yes	Yes
MTBE	N/A	N/A	N/A	N/A	N/A	Yes
<i>Mechanical Filtration Unit</i>						
Cyst	Yes	Yes	Yes	Yes	Yes	Yes
Asbestos	Yes	Yes	Yes	Yes	Yes	Yes

Everpure's H-300, H-300+M, H-300HSD and H-1200 filter systems feature KDF® media for bacteriostatic control. ** H-54, H-104, H-300, H-300-HSD, H-300+M, and H-1200 systems have the ability to inhibit mineral deposit build-up in coffee makers, ice makers, chillers and instant hot water makers. Following this guide will simplify your system's installation, and once installed, your system will require little maintenance other than periodic cartridge replacement. **KDF® general claims, applicable to the technology for potable water treatment, include bacteria reduction and scale inhibition. KDF® is a registered trademark of Fluid Treatment, Inc.



The Owner's Guide Is Applicable For The Following Model Numbers:

Model H-54 Rated Capacity: 750 Gallons (2835 Liters)*	Model H-104 Rated Capacity: 1,000 Gallons (3780 Liters)*
Model H-300 Rated Capacity: 300 Gallons (1140 Liters)*	Model H-300-HSD Rated Capacity: 300 Gallons (1140 Liters)*
Model H-300+M Rated Capacity: 500 Gallons (1892 Liters)*	Model H-1200 Rated Capacity: 1,000 Gallons (3780 Liters)*

*For optimum performance, cartridge replacement is required once a year, or sooner if flow becomes too slow for convenience, or if the unit's rated capacity is reached.

Dimensions Table	Width	Height	Depth
H-54	5"	15"	5"
H-104	5"	20"	5"
H-300	5"	22"	5"
H-300-HSD	5"	22"	5"
H-300+M	5" w/o monitor	22"	5"
H-1200	13"	22"	5"

* Not tested or certified by NSF

Specifications

For Cold Water Use Only

Temperature: 35-100°F (2-38°C)

Min.-Max. Working Pressure: 10-125 psi (0.7-8.6 bar)

Service Flow Rate: 0.5 gpm (1.9 Lpm)

Your Everpure Drinking Water System will provide delicious tasting, crystal clear water directly from the filtered tap...water that's great for making hot and cold beverages and ideal for drinking and cooking. All of the contaminants and other substances reduced by your system are not necessarily in your drinking water. However, the system can reduce chlorine taste and odor, as well as cysts, asbestos fibers, and other particulates 1/2 micron (1/50,000 of an inch) and larger.

INSTALLATION

It is important that the installation be clean and sanitary. It is recommended that all water-contact parts—fittings, tubing, faucet, etc.—be immersed in disinfectant (a capful of laundry bleach per bucket of water) at the start of the installation.

Most units are packaged with their brackets mounted for rear wall installation (see Fig. A). The bracket from a single-headed unit may be removed and remounted for left or right wall installation (see Fig. B or C) whichever is most appropriate to the plumbing configuration. Although dual-headed systems have only one bracket position, a dual-headed unit can be mounted on the left or right wall. However, to do so may complicate cartridge changing.



NSF International Tested and Certified to
NSF/ANSI 42 & 53

The system must be mounted in the vertical position, cartridge(s) hanging.

Use the unit's bracket as a template to mark and set mounting hardware. Single cartridge systems will weigh about 7 lbs. when filled with water; dual cartridge units will weigh about 15 lbs. For drywall or plaster, fasteners other than the two screws provided should be used to assure a secure mounting.

The undersink location selected for system installation should:

- 1) Allow clearance to open and close valve.
- 2) Allow room on either side of cartridge for grasping and turning.
- 3) Allow ring label(s) to be clearly visible to simplify cartridge changing.
- 4) Allow a minimum clearance of 2.5 inches (6.5 cm) under the cartridge(s) for removing and replacing the cartridge. Recommended installation is that the bottom of the head assembly is 18 inches (45.7 cm) above the cabinet floor for future upgrades.
- 5) Allow sufficient space above unit to avoid crimping of "in" and "out" water lines.

Follow instructions provided with faucet for its installation. Use the illustration on next page as a guide for connecting the Everpure system to the cold water line and the filter faucet. The illustrated guide provides general directions for installation, if we recommend the installation be completed by a professional plumber. The inlet and outlet fittings of the system accept 1/4" plastic or copper tubing. Teflon tape is recommended for all threaded fitting connections.

The 0.5 gpm flow control fitting (quick-connect gray fitting with black identifying band or white fitting) supplied with H-54, H-104, H-300, H-300-HSD, H-300+M, and H-1200 systems must be installed in the outlet of the head (marked with an "X" in the figures above – see Figures A, B & C).

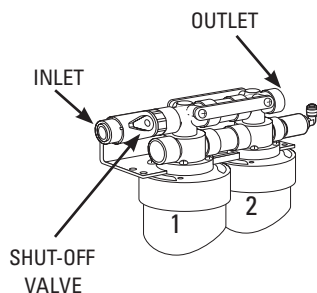
When the installation is complete, double-check for proper location of inlet and outlet water lines. The inlet line from the cold water source should be attached to the inlet port (see above diagram); the line leaving the filter going to the filter faucet exits the filter from the outlet port. Look for direction-of-flow arrow on top of head(s). With the valve handle(s) in the off position (as far counterclockwise as possible) turn on water supply and check for leaks. Install cartridge(s) as directed on the cartridge label(s), and recheck for leaks. For cold water use only.

SERIES HEAD CONFIGURATIONS – H-1200

You can connect your Everpure system for quality water to several water-using appliances, such as an ice or water refrigerator, an instant hot water dispenser or chiller, and a plumbed-in coffee maker, in addition to the filter faucet. Install tees in the water line coming from the Everpure system to the other appliances. (We do not recommend installation of an Everpure system to an icemaker only, without a filter faucet connection under the sink. If installed to an icemaker only, an activation valve is required.)

The Universal Plumbing Code adopted by over 20 states, and other specific state codes prohibit the use of saddle valves and their use is not permissible. You must adhere to your state plumbing codes. Consult your licensed plumber for installation.

* Not tested or certified by NSF.



INSTALLATION INSTRUCTIONS FOR H-300+M WITH A FILTER REPLACEMENT MONITOR†

The monitor is installed after the filter, but before the connections to faucets, icemakers or other water using devices. The monitor comes with John Guest quick disconnect fittings for easy installation.

Steps to install:

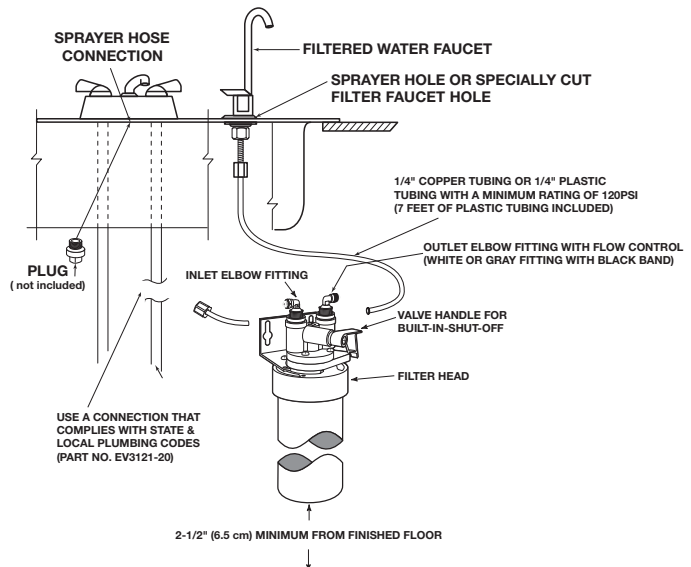
1. Connect the tubing from the Everpure head to the inlet (left side) port of the monitor.
2. Connect the tubing from the faucet or other device to the outlet (right side) port of the monitor.
3. Tug gently on both tubes to verify secure connections. When pressurizing system inspect the monitor for any leaks.
4. Use a piece of velcro to secure monitor to a vertical or horizontal surface.
5. To set the monitor to work with your specific system please refer to the instructions supplied with monitor.

Contact your local Everpure distributor for complete monitor instructions (EV3112-52)

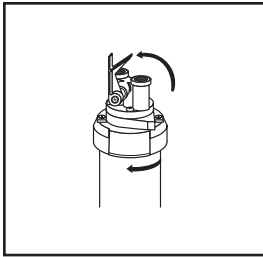
Operation – Green (Filter still within 90% of capacity); Yellow (90% of filter's capacity has been used, recommend purchasing replacement cartridge); Red (Filter's capacity has been reached or cartridge has been installed for a year; replace cartridge immediately).

You can connect your Everpure system for quality water to several water-using appliances, such as an ice or water refrigerator, an instant hot water dispenser or chiller, and a plumbed-in coffee maker, in addition to the filter faucet. Install tees in the water line coming from the Everpure system to the other appliances. (We do not recommend installation of an Everpure system to an icemaker only, without a filter faucet connection under the sink. If installed to an icemaker only, an activation valve is required.)

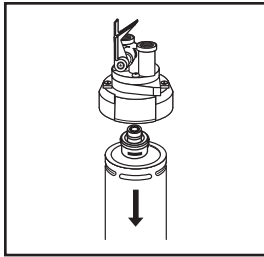
The Universal Plumbing Code adopted by over 20 states, and other specific state codes prohibit the use of saddle valves and their use is not permissible. You must adhere to your state plumbing codes. Consult your licensed plumber for installation.



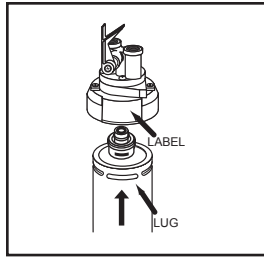
CARTRIDGE CHANGE PROCEDURE



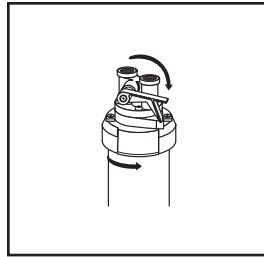
1. Shut off water and relieve line pressure. For heads with built-in shut-off valve, fully lift handle until it stops.
2. Hold head firmly. Push upward on cartridge and turn it to left 1/4 turn, until rotation stops.



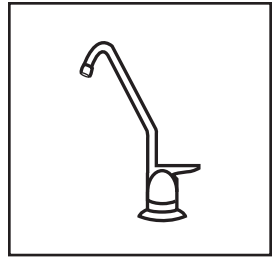
3. Pull cartridge down and out of head.
4. Align new cartridge lug with head label. Hold head firmly. Insert new cartridge into head.



5. Turn cartridge to right 1/4 turn until rotation stops.
 6. Turn on water supply. For heads with built-in valve, lower handle.
- NOTE:**
For Head with Revolving Ring, make sure the valve handle locks firmly into the ring notch.



7. NOW FLUSH CARTRIDGE! Follow start up procedure.



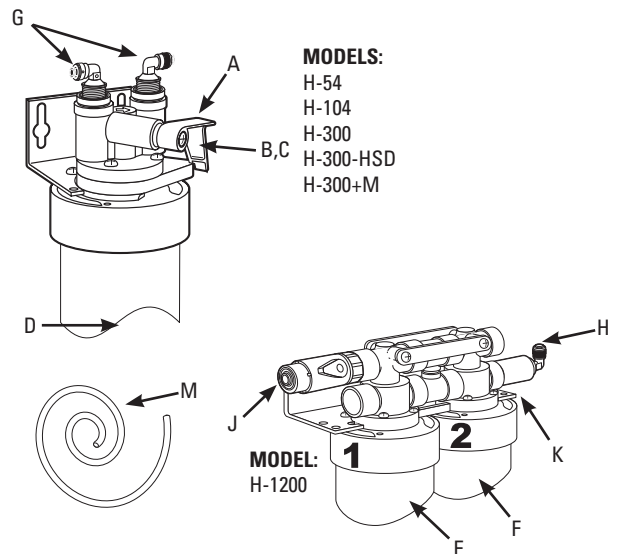
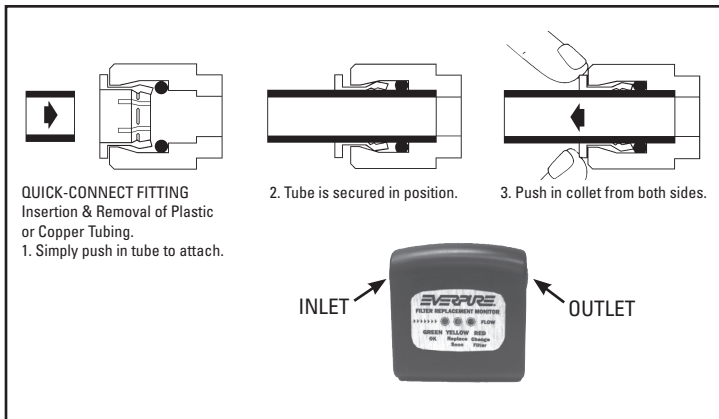
START-UP PROCEDURE
Run water through filtered water faucet for three minutes to activate cartridge. Activation also purges air and carbon fines. (A unit plumbed to an ice maker should also be plumbed to a drinking water tap to insure satisfactory performance.)

NOTE:
Dispensed water may appear cloudy for a few days. This is due to air in the filter cartridge, and does not affect system performance or contaminant reduction in any way.



PARTS LIST

Key	Description	Part Number
A	Shutoff valve handle for nylon head	EV3034-52
B	Valve stem	EV5896-00
C	Valve stem screw	EV3012-00
D	Replacement cartridge (match original cartridge, all 6 pk.)	
	H-54	EV9730-06
	H-104	EV9612-16
	H-300	EV9270-72
	H-300-HSD	EV9270-74
	H-300+M	EV9270-80
E	#1 Replacement cartridge (match original cartridge) H-1200 #1 (Half of 2-Piece Set)	EV9282-01
F	#2 Replacement cartridge (match original cartridge) H-1200 #2 (Half of 2-Piece Set)	EV9282-01
G	Restrictor fittings pack, John Guest 3/8" FPT for all models	EV3081-68
H	Use restricted elbow (white or gray fitting with black collar) from restrictor fittings pack listed as G above	EV3081-68
I	Shutoff valve 3/8" John Guest x 3/8" FPT	EV3100-79
J	Shutoff valve 1/4" John Guest x 3/8" FPT	EV3098-60
K	3/8" x 3/8" MPT Outlet Coupling	EV3098-56
L	Adapter, Angle Stop Valve	EV3121-20
M	Tubing	A0860119



LIMITED WARRANTY

You have just purchased one of the finest water treatment units made. As an expression of our confidence in Everpure products, this product is warranted against defects in material and workmanship to the original end-user when installed in accordance with Everpure specifications. The warranty period commences from the date of purchase** and is administered as follows:

For a period of ONE YEAR Replaceable elements (i.e., filter & water treatment cartridges)*

For a period of FIVE YEARS The entire system (excluding replaceable elements)

*This is for material & workmanship, not filter or water treatment cartridge life.

** PROOF OF PURCHASE REQUIRED.

The unit must be used in operating conditions that conform to Everpure's recommended design guidelines. This warranty will not apply if the unit has been modified, repaired or altered by someone not authorized by Everpure.

If a part described above is found defective within the specified period, you should notify Everpure technical service at the phone number listed below. Any part found defective within the terms of this warranty will be repaired or replaced (at Everpure's discretion) by your local dealer (labor not covered). Any repaired or replaced warranty item will be incorporated under the original warranty terms of the existing system.

We are not responsible for damage caused by accident, fire, flood, freezing, Act of God, misuse, misapplication, neglect, oxidizing agents (such as chlorine, ozone, chloramines and other related components), alteration, installation or operation contrary to our printed instructions, or by the use of accessories or components which do not meet Everpure's specifications. Refer to the specifications section in the Installation and Operating manual for approved application parameters.

Our product performance specifications are furnished with each water treatment unit. TO THE EXTENT PERMITTED BY LAW, EVERPURE DISCLAIMS ALL IMPLIED WARRANTIES, INCLUDING WITHOUT LIMITATION WARRANTIES OF MERCHANTABILITY AND FITNESS FOR PARTICULAR PURPOSE; TO THE EXTENT REQUIRED BY LAW, ANY SUCH IMPLIED WARRANTIES ARE LIMITED IN DURATION TO THE PERIOD SPECIFIED ABOVE FOR THE ENTIRE WATER TREATMENT UNIT. As a manufacturer, we do not know the characteristics of your water supply or the purpose for which you are purchasing this product. The quality of water supplies may vary seasonally or over a period of time, and your water usage rate may vary as well. Water characteristics can also differ considerably if this product is moved to a new location. For these reasons, we assume no liability for the determination of the proper equipment necessary to meet your requirements, and we do not authorize others to assume such obligations for us. Further, we assume no liability and extend no warranties, express or implied, for the use of this product with a non-potable water source or a water source which does not meet the conditions for use described in the owner's guide or performance data sheet for this product. OUR OBLIGATIONS UNDER THIS WARRANTY ARE LIMITED TO THE REPAIR OR REPLACEMENT (AT EVERPURE'S DISCRETION) OF THE FAILED PARTS OF THE WATER TREATMENT UNIT, AND WE ASSUME NO LIABILITY WHATSOEVER FOR DIRECT, INDIRECT, INCIDENTAL, CONSEQUENTIAL, SPECIAL, GENERAL OR OTHER DAMAGES.

Some states do not allow the exclusion of implied warranties or limitations on how long an implied warranty lasts, so the above limitation may not apply to you. Similarly, some states do not allow the exclusion of incidental or consequential damages, so the above limitation or exclusion may not apply to you. This warranty gives you specific legal rights, and you may also have other rights which vary from state to state. Consult your telephone directory for your local independently operated Everpure dealer, or write Everpure for warranty and service information.



For sales, replacement components, and service, contact your Everpure dealer or:

Everpure, LLC: 1040 Muirfield Drive • Hanover Park, Illinois 60133 • 800.323.7873

In Europe: Toekomstlaan 30 • B-2200 Herentals, Belgium

In Japan: Hashimoto MN Bldg. 7F • 3-25-1 Hashimoto Sagamihara-Shi • Kanagawa 229-1103, Japan

Technical Service

800.942.1153

www.everpure.com